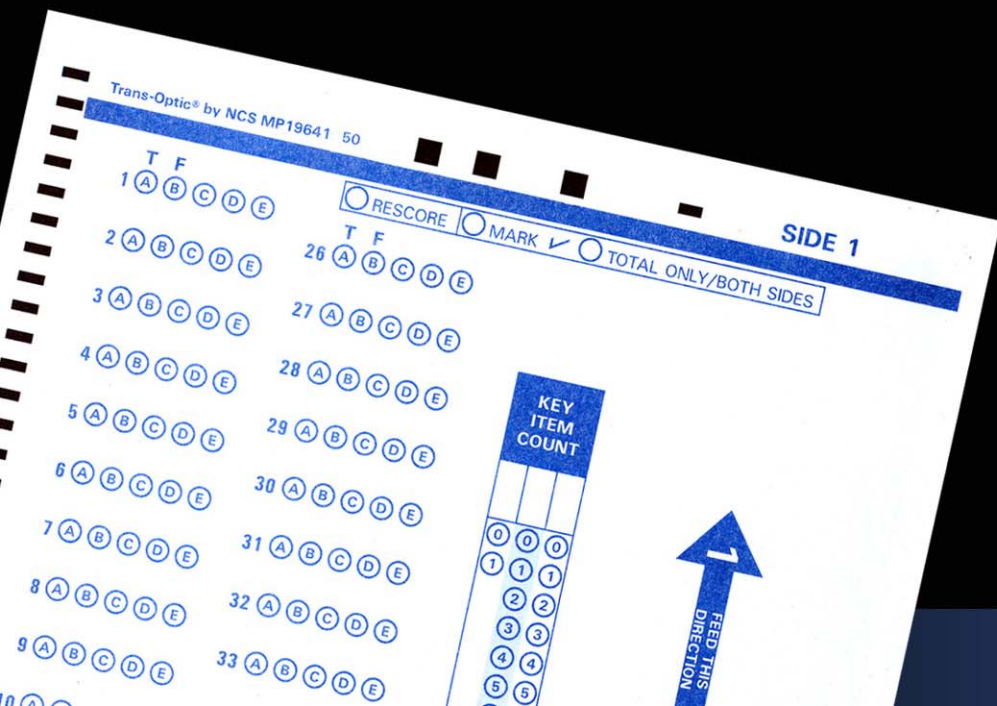


# LEAP & GEE TEST RESULTS

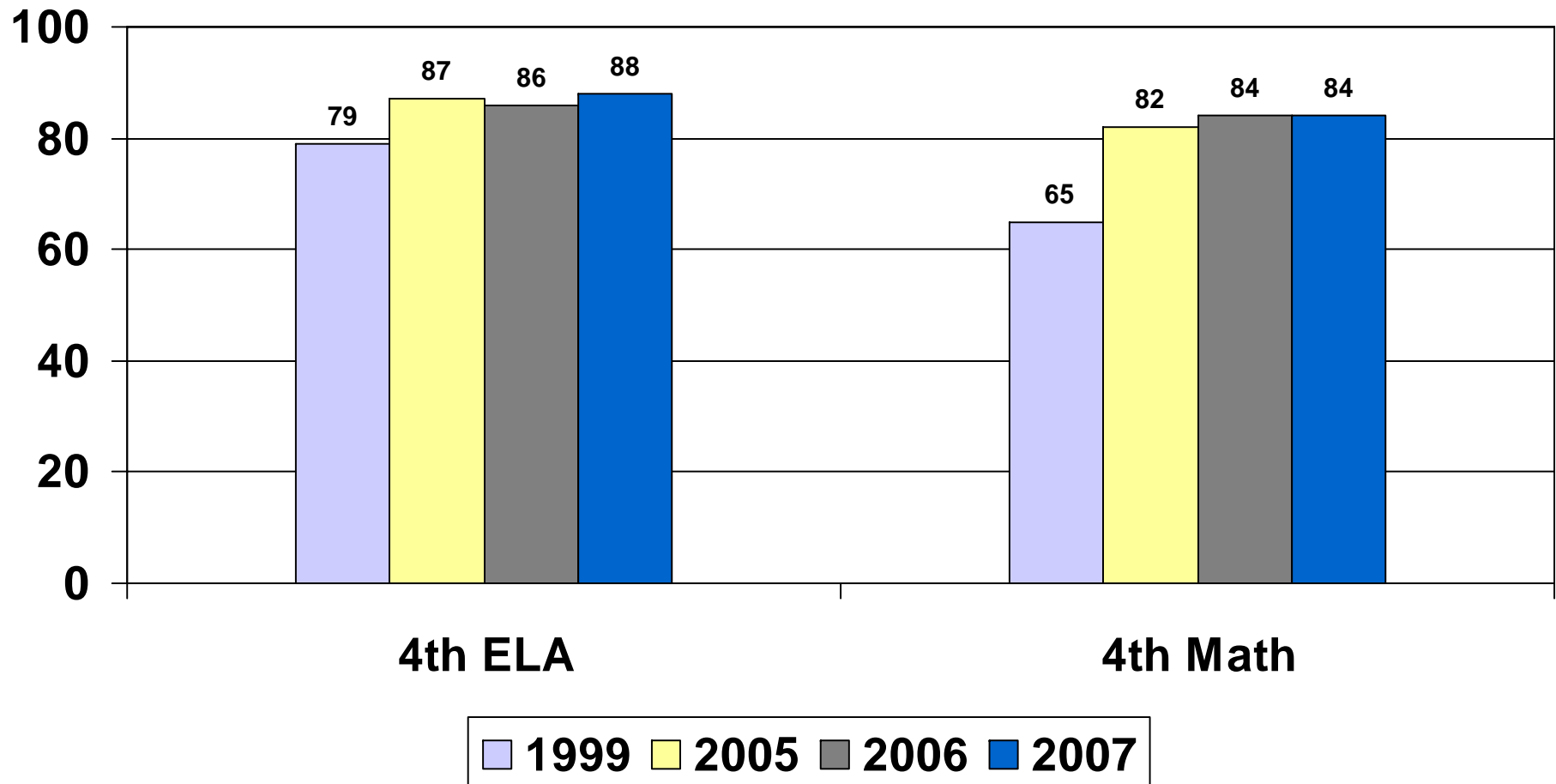


May 10, 2007

SPRING 2007

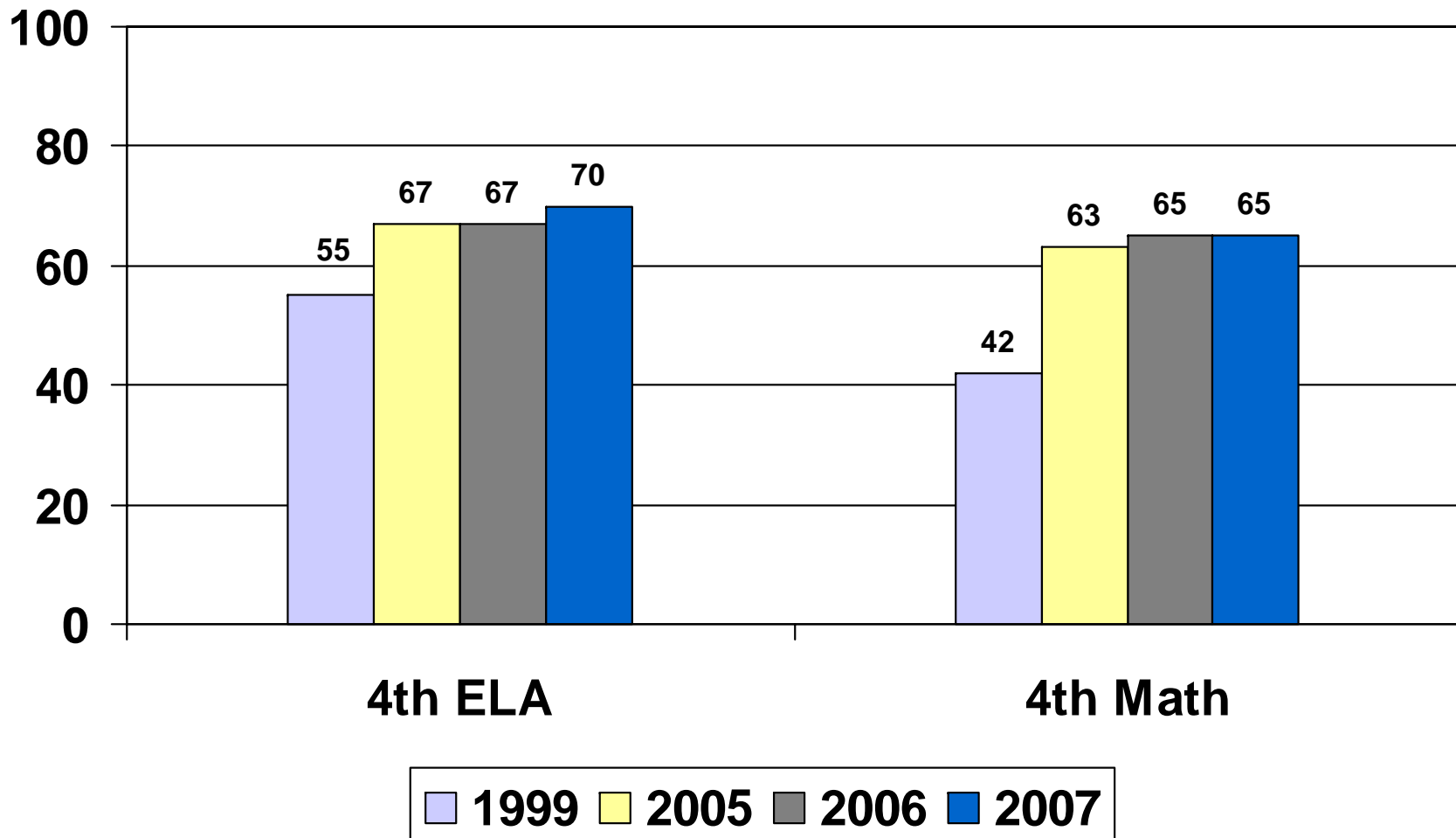
# 4<sup>th</sup> Grade: Approaching Basic & Above

1 Up, 1 Even  
*1<sup>st</sup> Time Test Takers*



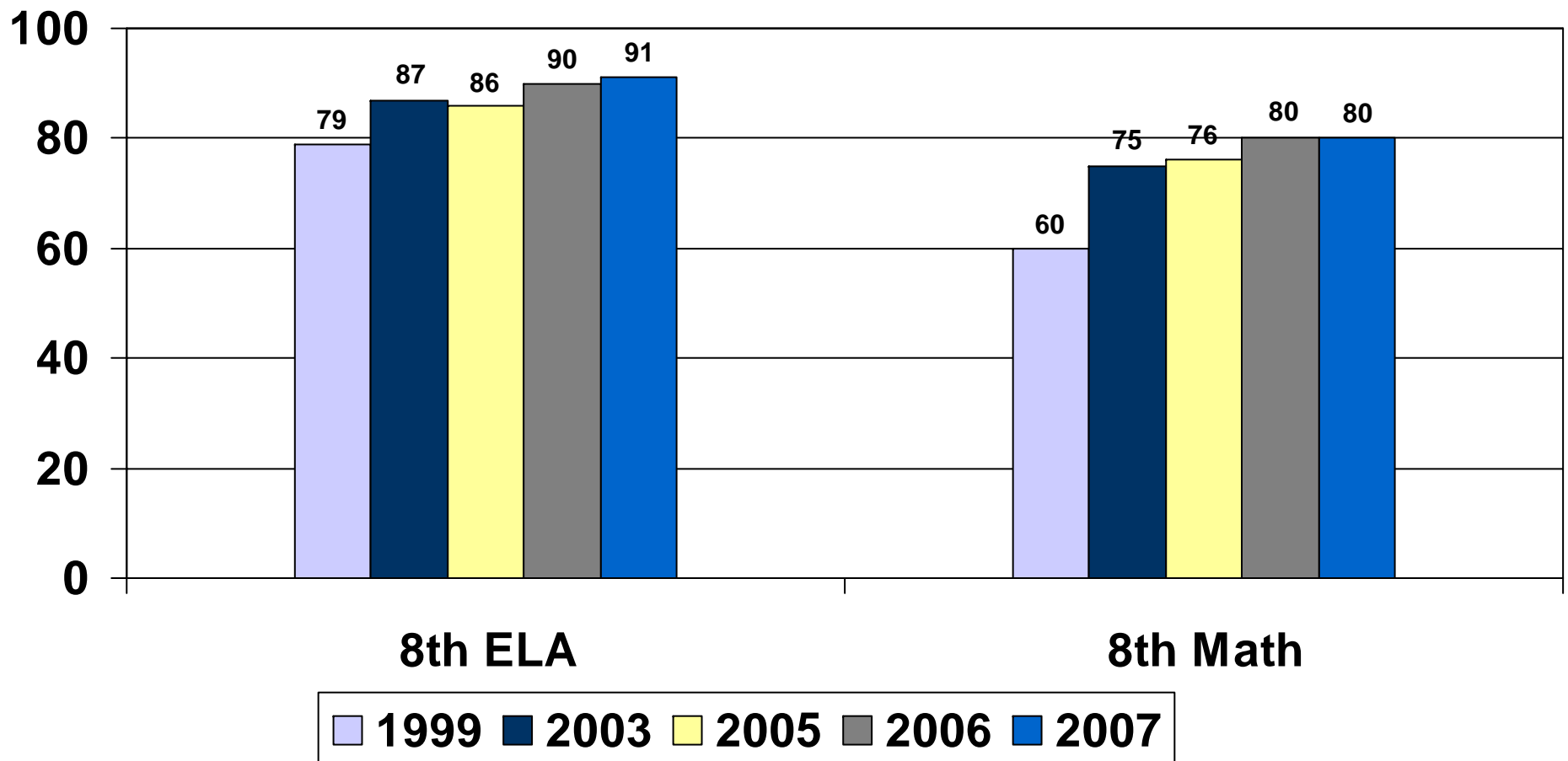
# 4<sup>th</sup> Grade: Basic & Above

1 Up, 1 Even  
*1<sup>st</sup> Time Test Takers*



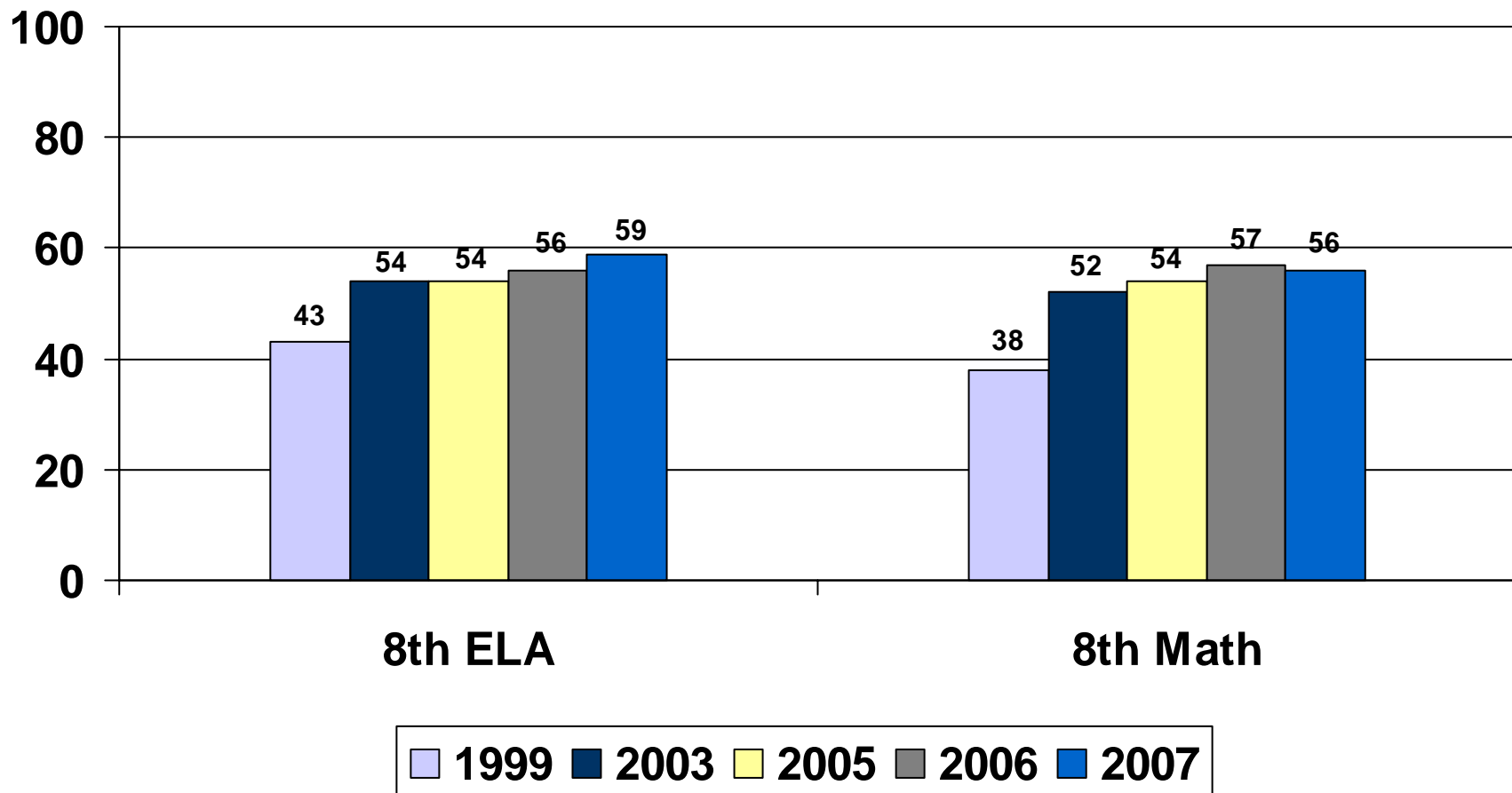
# 8<sup>th</sup> Grade: Approaching Basic & Above

1 Up, 1 Even  
*1<sup>st</sup> Time Test Takers*



# 8<sup>th</sup> Grade: Basic & Above

1 Up, 1 Down  
*1<sup>st</sup> Time Test Takers*



# High Stakes Testing Percent Failing 4<sup>th</sup> grade

*1<sup>st</sup> Time Test Takers*

<b>2004</b> AB/B	<b>2005</b> AB/B	<b>2006</b> AB/B	<b>2007</b> AB/B
<b>18,232</b> (34%)	<b>14,826</b> (29%)	<b>12,958</b> (28%)	<b>12,392</b> (26%)

# High Stakes Testing Percent Failing 8<sup>th</sup> Grade

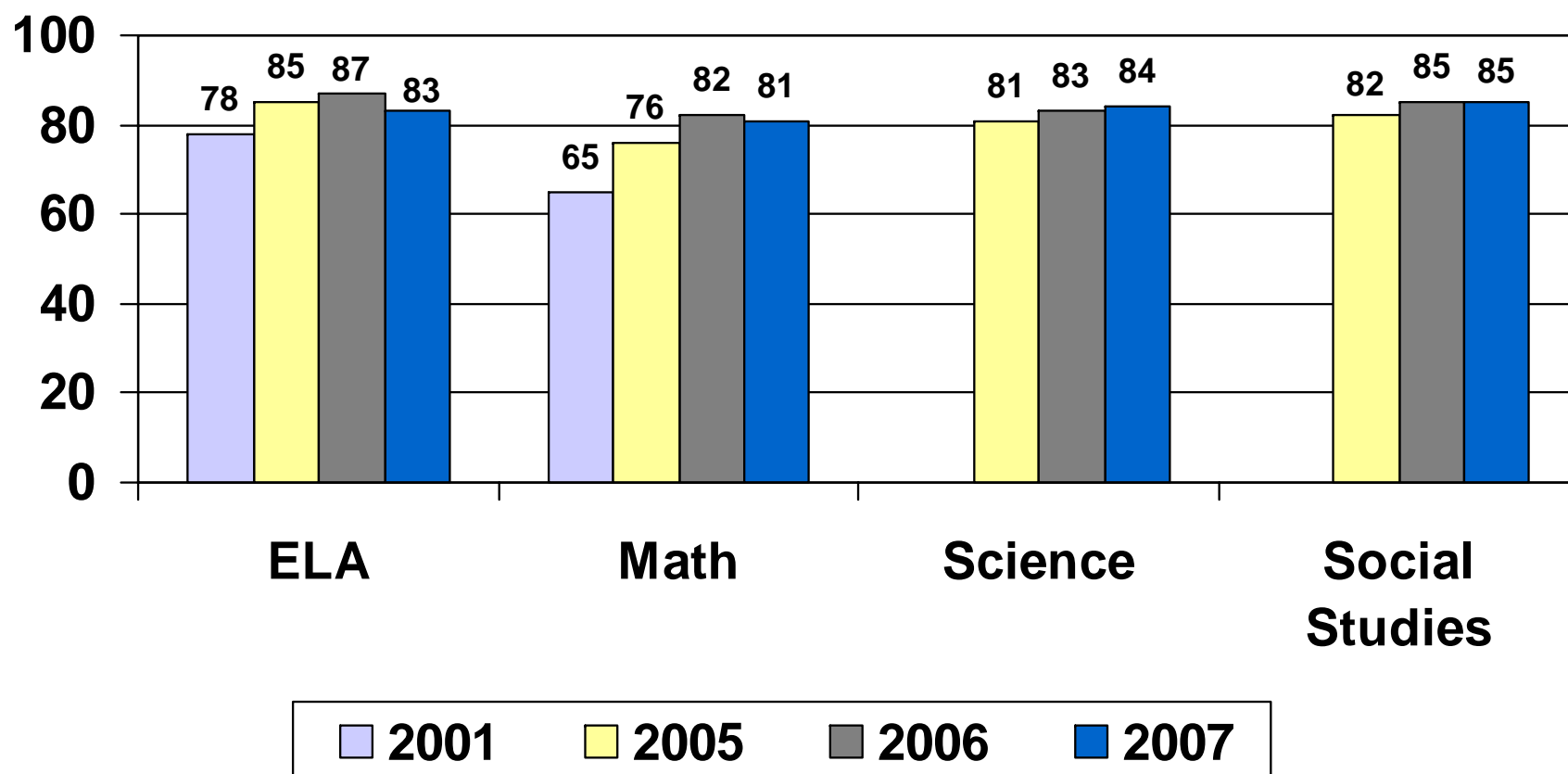
*1<sup>st</sup> Time Test Takers*

<b>2000</b> AB/AB	<b>2006</b> AB/AB	<b>2007</b> AB/B
<b>19,236</b> (36%)	<b>10,374</b> (22%)	<b>15,741</b> (34%)

# GEE: Approaching Basic and Above

1 Up, 2 Down, 1 Even

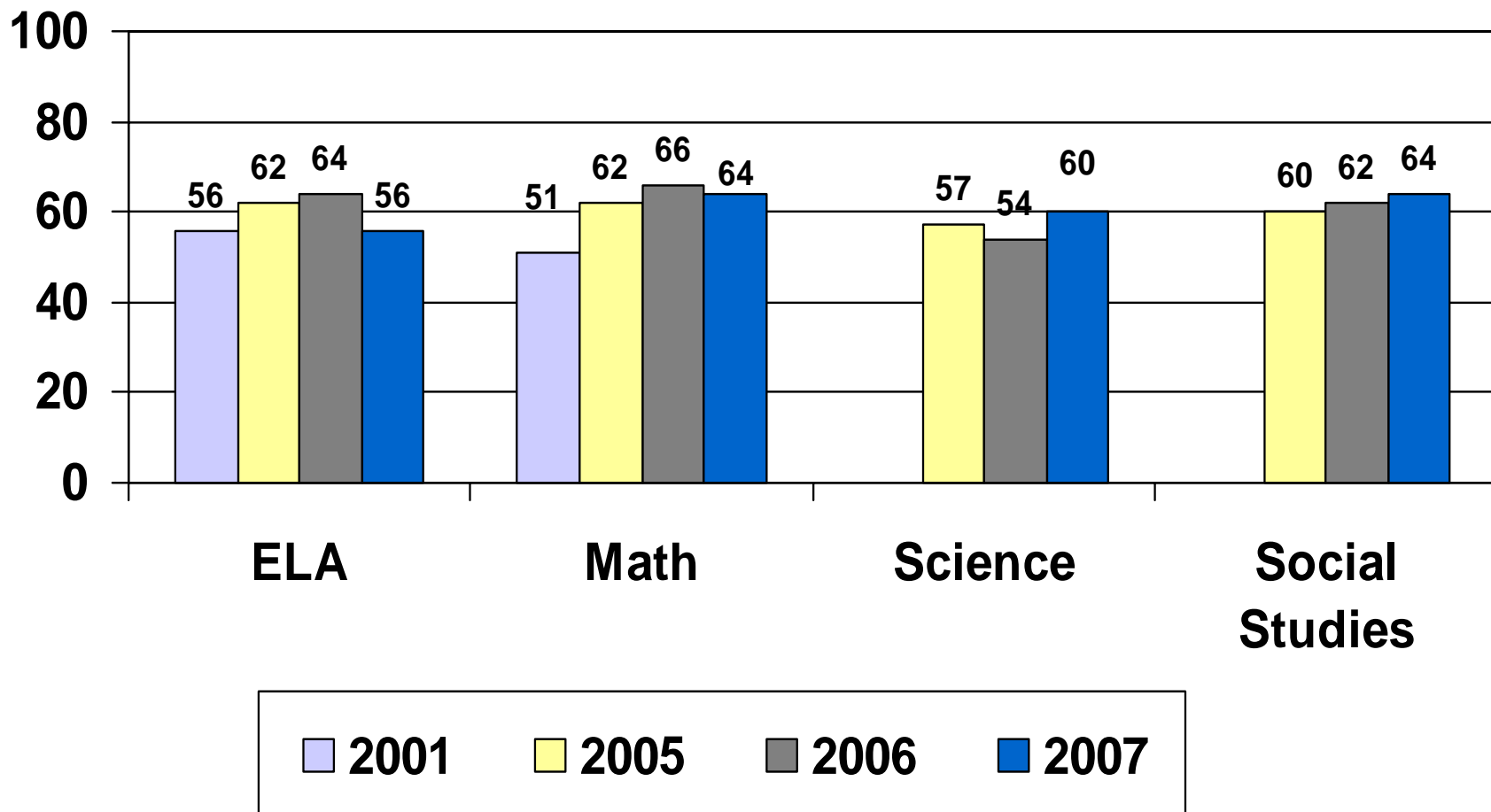
*1<sup>st</sup> Time Test Takers*



# GEE: Basic and Above

2 Up, 2 Down

*1<sup>st</sup> Time Test Takers*



# Total All Grades

15 up, 5 down, 4 even

	ELA	M	S	SS	
AB	✓	--	✓	✓	4 <sup>th</sup>
B	✓	--	✓	✓	
AB	✓	--	✓	✓	8 <sup>th</sup>
B	✓	X	✓	✓	
AB	X	X	✓	--	GEE
B	X	X	✓	✓	

# Summary

- 4<sup>th</sup> and 8<sup>th</sup> grade – Excellent Results
  - ELA, Science and Social Studies up nicely
    - 4<sup>th</sup> grade ELA- 25% Mastery and above  
70% Basic and above
- High Schools:
  - 10<sup>th</sup> Grade:
    - Not good: English dropped; math down
  - 11<sup>th</sup> slight improvement
  - Over time, not seeing the same improvement K-8 has experienced

# QUESTIONS?

