



# County Health Rankings

Mobilizing Action Toward Community Health

2010

**Louisiana**



Robert Wood Johnson Foundation



UNIVERSITY OF WISCONSIN

**Population Health Institute**

*Translating Research into Policy and Practice*

INSIDE FRONT COVER – INTENTIONALLY BLANK

## Introduction

Where we live matters to our health. The health of a community depends on many different factors, including quality of health care, individual behavior, education and jobs, and the environment. We can improve a community's health through programs and policies. For example, people who live in communities with ample park and recreation space are more likely to exercise, which reduces heart disease risk. People who live in communities with smoke-free laws are less likely to smoke or to be exposed to second-hand smoke, which reduces lung cancer risk.

The problem is that there are big differences in health across communities, with some places being much healthier than others. And up to now, it has been hard to get a standard way to measure how healthy a county is and see where they can improve.

The Robert Wood Johnson Foundation and the University of Wisconsin Population Health Institute are pleased to present the 2010 *County Health Rankings*, a collection of 50 reports that reflect the overall health of counties in every state across the country. For the first time, counties can get a snapshot of how healthy their residents are by comparing their overall health and the factors that influence their health, with other counties in their state. This will allow them to see county-to-county where they are doing well and where they need to improve. Everyone has a stake in community health. We all need to work together to find solutions. The *County Health Rankings* serve as both a call to action and a needed tool in this effort.

All of the *County Health Rankings* are based upon this model of population health improvement:



In this model, health outcomes are measures that describe the current health status of a county. These health outcomes are influenced by a set of health factors. These health factors and their outcomes may also be affected by community-based programs and policies designed to alter their distribution in the community. Counties can improve health outcomes by addressing all health factors with effective, evidence-based programs and policies.



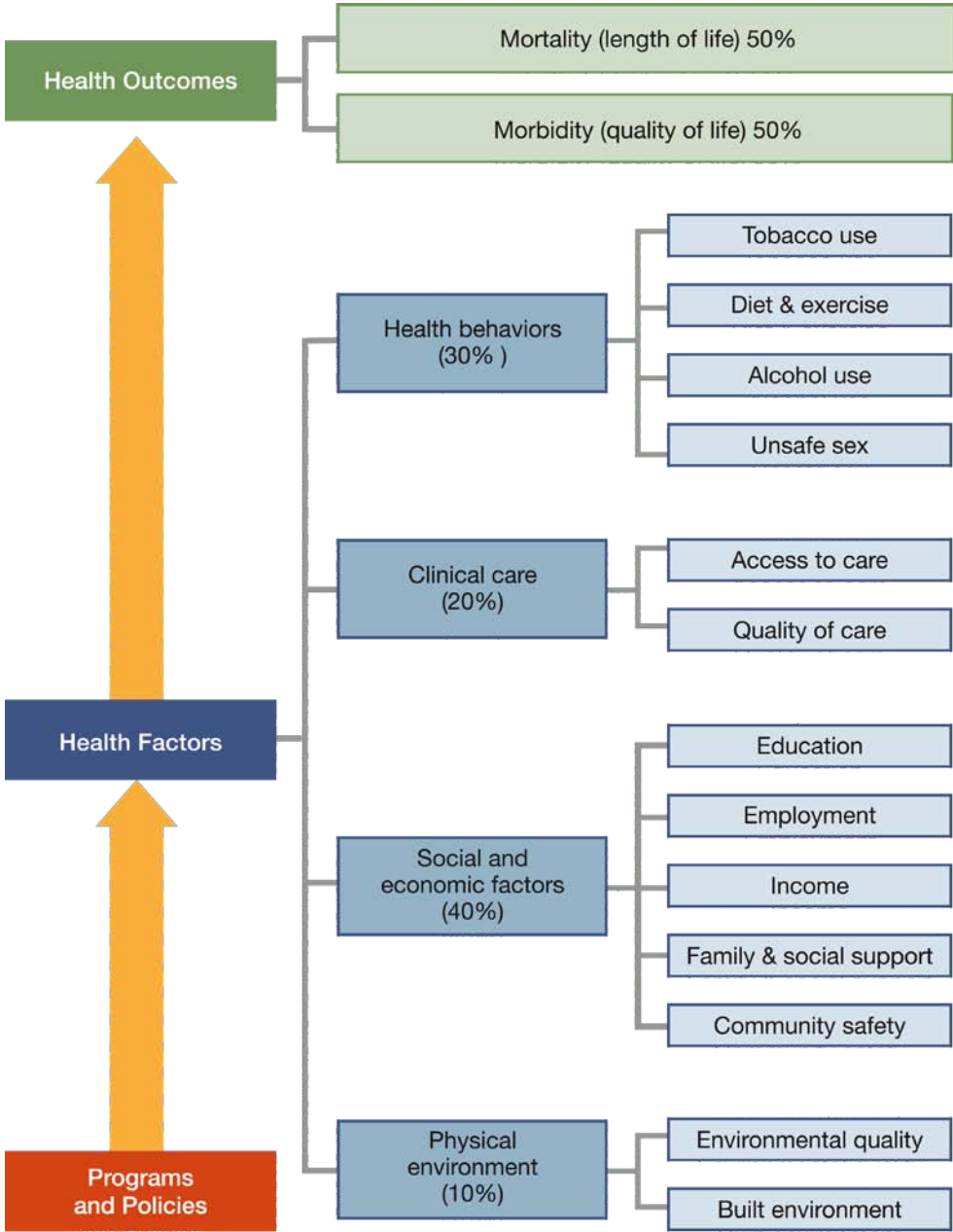
Institute of Medicine, 2002

To compile the *Rankings*, we built on our prior work in Wisconsin, worked closely with staff from the Centers for Disease Control and Prevention and Dartmouth College, and obtained input from a team of expert advisors. Together we selected a number of population health measures based on scientific relevance, importance, and availability of data at the county level. For a more detailed explanation of the choice of measures, see [www.countyhealthrankings.org](http://www.countyhealthrankings.org).

# The Rankings

This report ranks Louisiana counties according to their summary measures of **health outcomes** and **health factors**, as well as the components used to create each summary measure. The figure below depicts the structure of the *Rankings* model. Counties receive a rank for each population health component; those having high ranks (e.g., 1 or 2) are estimated to be the “healthiest.”

Our summary **health outcomes** rankings are based on an equal weighting of mortality and morbidity measures. The summary health **factors** rankings are based on weighted scores of four types of factors: behavioral, clinical, social and economic, and environmental. The weights for the factors (shown in parentheses in the figure) are based upon a review of the literature and expert input, but represent just one way of combining these factors.

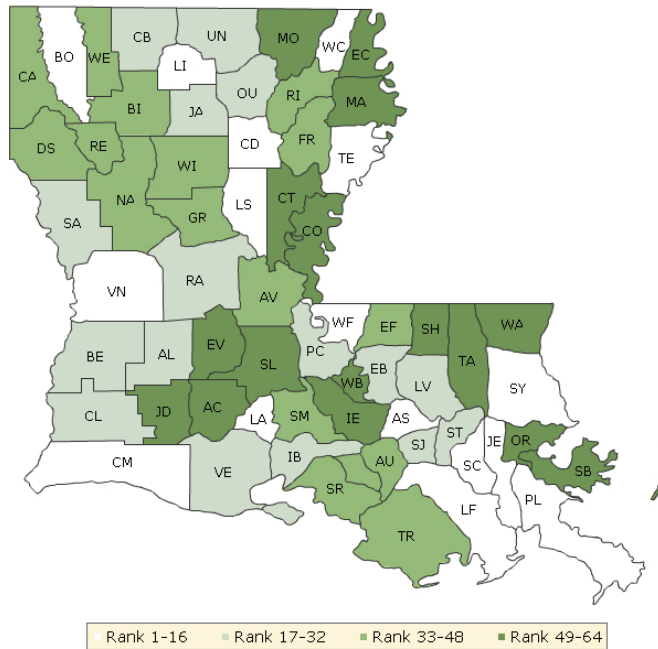


County Health Rankings model ©2010 UWPHI

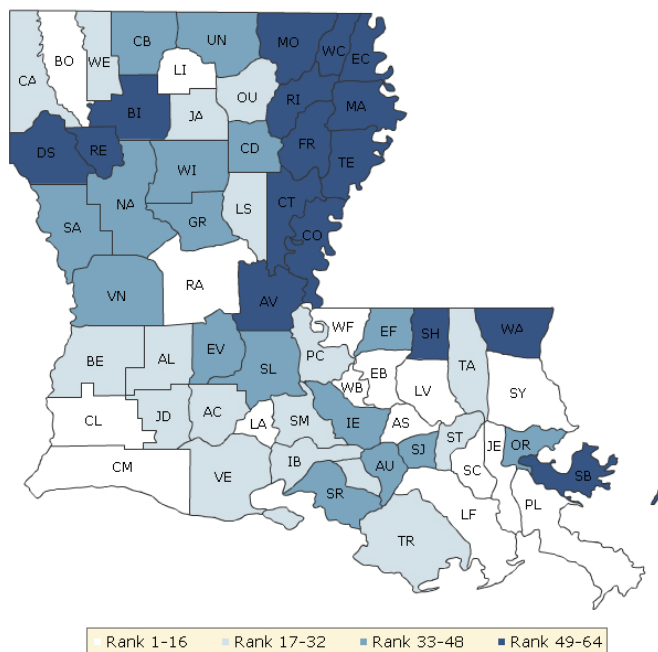
The maps on this page display Louisiana's counties divided into groups by health rank. The lighter colors indicate better performance in the respective summary rankings. The green map shows the distribution of summary health outcomes. The blue displays the distribution of the summary rank for health factors.

Maps help locate the healthiest and least healthy counties in the state. The health factors map appears similar to the health outcomes map, showing how health factors and health outcomes are closely related.

### HEALTH OUTCOMES



### HEALTH FACTORS



## Summary Health Outcomes & Health Factors Rankings

Counties receive two summary ranks:

- Health Outcomes
- Health Factors

Each of these ranks represents a weighted summary of a number of measures.

Health outcomes represent how healthy a county is while health factors are what influences the health of the county.

Rank	Health Outcomes	Rank	Health Factors
1	St. Tammany	1	St. Tammany
2	Vernon	2	Lafayette
3	Cameron	3	East Baton Rouge
4	Bossier	4	Ascension
5	Lafayette	5	Jefferson
6	Ascension	6	Cameron
7	Lafourche	7	West Baton Rouge
8	Tensas	8	Bossier
9	West Carroll	9	Lafourche
10	St. Charles	10	West Feliciana
11	Lincoln	11	St. Charles
12	La Salle	12	Rapides
13	Plaquemines	13	Lincoln
14	West Feliciana	14	Livingston
15	Caldwell	15	Plaquemines
16	Jefferson	16	Calcasieu
17	Vermilion	17	Terrebonne
18	Livingston	18	Iberia
19	East Baton Rouge	19	Ouachita
20	Union	20	Caddo
21	Ouachita	21	La Salle
22	Pointe Coupee	22	Beauregard
23	Allen	23	Vermilion
24	Jackson	24	Acadia
25	Claiborne	25	St. John the Baptist
26	St. James	26	Jackson
27	Calcasieu	27	Pointe Coupee
28	Iberia	28	Jefferson Davis
29	Sabine	29	Allen
30	Beauregard	30	St. Martin
31	St. John the Baptist	31	Tangipahoa
32	Rapides	32	Webster
33	Assumption	33	East Feliciana
34	Terrebonne	34	Natchitoches
35	Winn	35	Sabine
36	Caddo	36	Caldwell
37	Grant	37	Assumption
38	St. Martin	38	Grant
39	Natchitoches	39	Iberville
40	Bienville	40	St. Mary

Rank	Health Outcomes	Rank	Health Factors
41	St. Mary	41	Winn
42	De Soto	42	St. Landry
43	Red River	43	Evangeline
44	Webster	44	Vernon
45	East Feliciana	45	St. James
46	Avoyelles	46	Union
47	Franklin	47	Orleans
48	Richland	48	Claiborne
49	Jefferson Davis	49	Avoyelles
50	Evangeline	50	Richland
51	Acadia	51	Bienville
52	Tangipahoa	52	Concordia
53	Iberville	53	Catahoula
54	West Baton Rouge	54	Washington
55	Catahoula	55	Tensas
56	St. Landry	56	De Soto
57	Morehouse	57	St. Helena
58	St. Helena	58	Red River
59	Orleans	59	St. Bernard
60	Concordia	60	West Carroll
61	Washington	61	Madison
62	St. Bernard	62	Morehouse
63	East Carroll	63	Franklin
64	Madison	64	East Carroll

## Health Outcomes Rankings

The summary health outcomes ranking is based on measures of mortality and morbidity. Each county's ranks for mortality and morbidity are displayed here. The mortality rank, representing length of life, is based on a measure of premature death: the years of potential life lost prior to age 75.

The morbidity rank is based on measures that represent health-related quality of life and birth outcomes. We combine four morbidity measures: self-reported fair or poor health, poor physical health days, poor mental health days, and the percent of births with low birthweight.

Rank	Mortality	Morbidity
1	Lafourche	West Feliciana
2	Bossier	St. Tammany
3	St. Tammany	Tensas
4	Vernon	Vernon
5	Cameron	Cameron
6	Allen	Caldwell
7	West Carroll	La Salle
8	Ascension	Lafayette
9	Lafayette	St. Charles
10	Plaquemines	Ascension
11	Vermilion	Lincoln
12	Lincoln	Bossier
13	Assumption	Livingston
14	Ouachita	Jefferson
15	Union	Beauregard
16	Jackson	East Feliciana
17	St. Charles	Claiborne
18	Sabine	East Baton Rouge
19	Tensas	Lafourche
20	La Salle	Plaquemines
21	Jefferson	West Carroll
22	Pointe Coupee	Calcasieu
23	East Baton Rouge	Vermilion
24	St. James	Pointe Coupee
25	Livingston	Union
26	Caldwell	Ouachita
27	Iberia	Red River
28	St. Martin	Rapides
29	Winn	St. James
30	St. John the Baptist	Tangipahoa
31	Claiborne	Grant
32	Terrebonne	Iberia
33	De Soto	Jackson
34	Rapides	Webster
35	Caddo	St. John the Baptist
36	Calcasieu	Terrebonne
37	Bienville	East Carroll
38	Catahoula	Caddo
39	Evangeline	Natchitoches
40	Natchitoches	Richland

Rank	Mortality	Morbidity
41	Grant	Bienville
42	West Feliciana	Winn
43	St. Mary	St. Mary
44	Beauregard	Acadia
45	Avoyelles	Franklin
46	Jefferson Davis	Sabine
47	Franklin	Orleans
48	West Baton Rouge	Allen
49	Webster	Avoyelles
50	Red River	Jefferson Davis
51	St. Landry	Madison
52	Richland	Iberville
53	Iberville	St. Martin
54	Acadia	Washington
55	Morehouse	De Soto
56	St. Helena	Morehouse
57	Tangipahoa	Assumption
58	East Feliciana	St. Helena
59	Concordia	St. Bernard
60	St. Bernard	St. Landry
61	Washington	Concordia
62	Orleans	West Baton Rouge
63	East Carroll	Evangeline
64	Madison	Catahoula

## Health Factors Rankings

The summary health factors ranking is based on four factors: health behaviors, clinical care, social and economic, and physical environment factors. In turn, each of these factors is based on several measures. Health behaviors include measures of smoking, diet and exercise, alcohol use, and risky sex behavior. Clinical

care includes measures of access to care and quality of care. Social and economic factors include measures of education, employment, income, family and social support, and community safety. The physical environment includes measures of environmental quality and the built environment.

Rank	Health Behaviors	Rank	Clinical Care	Rank	Social & Economic Factors	Rank	Physical Environment
1	St. Tammany	1	Orleans	1	St. Tammany	1	Evangeline
2	East Baton Rouge	2	Caddo	2	Lafayette	2	West Baton Rouge
3	Lafayette	3	Rapides	3	Ascension	3	St. Landry
4	Cameron	4	East Baton Rouge	4	St. Charles	4	St. Martin
5	Ascension	5	Lafayette	5	Livingston	5	Avoyelles
6	Jefferson	6	Calcasieu	6	Bossier	5	Washington
7	West Feliciana	7	Iberia	7	Lafourche	7	Tensas
8	West Baton Rouge	8	Jefferson	8	Cameron	8	La Salle
9	Lincoln	9	Ouachita	9	La Salle	9	Iberia
10	Caddo	10	St. Mary	10	Beauregard	10	Acadia
11	Orleans	11	St. John the Baptist	11	Vernon	11	Sabine
12	La Salle	12	Iberville	12	Lincoln	12	Tangipahoa
13	Ouachita	13	Bossier	13	Jefferson Davis	13	Assumption
14	Natchitoches	14	Webster	14	Calcasieu	14	Beauregard
15	Vermilion	15	St. Landry	15	East Baton Rouge	15	Terrebonne
16	Plaquemines	16	St. Tammany	16	Jackson	16	Jefferson Davis
17	Lafourche	17	Terrebonne	17	Plaquemines	17	Vermilion
18	Winn	18	Lafourche	18	Jefferson	18	East Feliciana
19	Bossier	19	Acadia	19	Terrebonne	19	Livingston
20	Rapides	20	Pointe Coupee	20	West Feliciana	20	Caldwell
21	West Carroll	21	Ascension	21	West Baton Rouge	21	Allen
22	Caldwell	22	West Feliciana	22	Rapides	22	Lafourche
23	Jackson	23	Tangipahoa	23	Vermilion	23	Cameron
24	Acadia	24	St. James	24	East Feliciana	24	Lafayette
25	Assumption	25	St. Charles	25	Sabine	25	West Carroll
26	Beauregard	26	Avoyelles	26	St. Martin	26	Catahoula
27	Terrebonne	27	West Baton Rouge	27	Iberia	27	St. Tammany
28	St. Charles	28	Assumption	28	Winn	28	Madison
29	Pointe Coupee	29	Jefferson Davis	29	Grant	29	St. Helena
30	Webster	30	Natchitoches	30	St. James	30	Richland
31	Claiborne	31	Morehouse	31	Allen	31	West Feliciana
32	Livingston	32	Madison	32	St. John the Baptist	32	Rapides
33	Allen	33	East Feliciana	33	Caldwell	33	East Carroll
34	Union	34	Plaquemines	34	St. Mary	34	Grant
35	Iberville	35	Claiborne	35	Ouachita	35	Concordia
36	Catahoula	36	St. Martin	36	Union	36	Webster
37	Iberia	37	Washington	37	Acadia	37	Plaquemines
38	Sabine	38	Richland	38	Tangipahoa	38	St. Bernard
39	Calcasieu	39	Evangeline	39	Pointe Coupee	39	Red River
40	Concordia	40	Concordia	40	Bienville	40	Vernon

Rank	Health Behaviors	Rank	Clinical Care	Rank	Social & Economic Factors	Rank	Physical Environment
41	Grant	41	Allen	41	Evangeline	41	Jefferson
42	St. John the Baptist	42	Tensas	42	Richland	42	Franklin
43	St. Bernard	43	Lincoln	43	De Soto	43	Natchitoches
44	Tangipahoa	44	Bienville	44	Claiborne	44	St. John the Baptist
45	St. Landry	45	Livingston	45	Webster	45	Pointe Coupee
46	Evangeline	46	East Carroll	46	Iberville	46	Union
47	Tensas	47	Vermilion	47	Caddo	47	Jackson
48	St. Martin	48	Beauregard	48	Washington	48	Bienville
49	St. Helena	49	Grant	49	Assumption	49	Bossier
50	Avoyelles	50	Franklin	50	Natchitoches	50	St. Charles
51	Red River	51	Cameron	51	St. Landry	51	St. Mary
52	Morehouse	52	De Soto	52	Avoyelles	52	Morehouse
53	East Feliciana	53	St. Helena	53	Catahoula	53	Orleans
54	St. James	54	Vernon	54	St. Bernard	54	Iberville
55	De Soto	55	Catahoula	55	Red River	55	Ouachita
56	Richland	56	Red River	56	Concordia	56	Calcasieu
57	Madison	57	Sabine	57	St. Helena	57	Lincoln
58	St. Mary	58	Winn	58	West Carroll	58	Claiborne
59	East Carroll	59	Union	59	Franklin	59	Caddo
60	Vernon	60	Jackson	60	Tensas	60	St. James
61	Jefferson Davis	61	Caldwell	61	Madison	61	East Baton Rouge
62	Bienville	62	La Salle	62	Morehouse	62	Winn
63	Washington	63	St. Bernard	63	Orleans	63	De Soto
64	Franklin	64	West Carroll	64	East Carroll	64	Ascension

## 2010 County Health Rankings: Measures, Data Sources, and Years of Data

	Measure	Data Source	Years of Data
<b>HEALTH OUTCOMES</b>			
<b>Mortality</b>	Premature death	National Center for Health Statistics	2004-2006
<b>Morbidity</b>	Poor or fair health	Behavioral Risk Factor Surveillance System	2002-2008
	Poor physical health days	Behavioral Risk Factor Surveillance System	2002-2008
	Poor mental health days	Behavioral Risk Factor Surveillance System	2002-2008
	Low birthweight	National Center for Health Statistics	2000-2006
<b>HEALTH FACTORS</b>			
<b>HEALTH BEHAVIORS</b>			
<b>Tobacco</b>	Adult smoking	Behavioral Risk Factor Surveillance System	2002-2008
<b>Diet and Exercise</b>	Adult obesity	National Center for Chronic Disease Prevention and Health Promotion	2006-2008
<b>Alcohol Use</b>	Binge drinking	Behavioral Risk Factor Surveillance System	2002-2008
	Motor vehicle crash death rate	National Center for Health Statistics	2000-2006
<b>High Risk Sexual Behavior</b>	Chlamydia rate	National Center for Health Statistics	2006
	Teen birth rate	National Center for Health Statistics	2000-2006
<b>CLINICAL CARE</b>			
<b>Access to Care</b>	Uninsured adults	Small Area Health Insurance Estimates, U.S. Census	2005
	Primary care provider rate	Health Resources & Services Administration	2006
<b>Quality of Care</b>	Preventable hospital stays	Medicare/Dartmouth Institute	2005-2006
	Diabetic screening	Medicare/Dartmouth Institute	2003-2006
	Hospice use	Medicare/Dartmouth Institute	2001-2005
<b>SOCIOECONOMIC FACTORS</b>			
<b>Education</b>	High school graduation	National Center for Education Statistics <sup>1</sup>	2005-2006
	College degrees	U.S. Census/American Community Survey	2000/2005-2007
<b>Employment</b>	Unemployment	Bureau of Labor Statistics	2008
<b>Income</b>	Children in poverty	Small Area Income and Poverty Estimates, U.S. Census	2007
	Income inequality	U.S. Census/American Community Survey <sup>2</sup>	2000/2005-2007
<b>Family and Social Support</b>	Inadequate social support	Behavioral Risk Factor Surveillance System	2005-2008
	Single-parent households	U.S. Census/American Community Survey	2000/2005-2007
<b>Community Safety</b>	Violent crime <sup>3</sup>	Uniform Crime Reporting, Federal Bureau of Investigation	2005-2007
<b>PHYSICAL ENVIRONMENT</b>			
<b>Air Quality</b> <sup>4</sup>	Air pollution-particulate matter days	U.S. Environmental Protection Agency / Centers for Disease Control and Prevention	2005
	Air pollution-ozone days	U.S. Environmental Protection Agency / Centers for Disease Control and Prevention	2005
<b>Built Environment</b>	Access to healthy foods	Census Zip Code Business Patterns	2006
	Liquor store density	Census County Business Patterns	2006

<sup>1</sup> State data sources for KY, NH, NC, PA, SC, and UT (2007-2008).

<sup>2</sup> Income inequality estimates for 2000 were calculated by Mark L. Burkey, North Carolina Agricultural & Technical State University, [www.ncat.edu/~burkeym/Gini.htm](http://www.ncat.edu/~burkeym/Gini.htm).

<sup>3</sup> Homicide rate (2000-2006) from National Center for Health Statistics for AK, AZ, AR, CO, CT, GA, ID, IN, IA, KS, KY, LA, MN, MS, MT, NE, NH, NM, NC, ND, OH, SD, UT, and WV. State data source for IL.

<sup>4</sup> Not available for AK and HI.

## CREDITS

### **Report Editors**

University of Wisconsin-Madison  
School of Medicine and Public Health  
Population Health Institute  
Bridget Booske, PhD, MHSA  
Jessica Athens, MS  
Patrick Remington, MD, MPH

This publication would not have been possible without the following contributions:

### **Conceptual Development**

David Kindig, MD, PhD  
Paul Peppard, PhD  
Patrick Remington, MD, MPH

### **Technical Advisors**

Amy Bernstein, ScD, Centers for Disease Control and Prevention  
Michele Bohm, MPH, Centers for Disease Control and Prevention  
Vickie Boothe, MPH, Centers for Disease Control and Prevention  
Ethan Burke, MD, MPH, Dartmouth Institute for Health Policy and Clinical Practice

### **Research Assistance**

Clare O'Connor  
Karen Odegaard  
Hyojun Park  
Matthew Rodock

### **Production and Editing**

Chuck Alexander  
Alex Field  
Joan Fischer  
Irene Golembiewski  
Jennifer Robinson

### **Design**

Forum One, Alexandria, VA  
Media Solutions, UW School of Medicine and Public Health

### **Metrics Advisory Group**

Yukiko Asada, PhD, Associate Professor, Community Health and Epidemiology, Dalhousie University, Halifax, Nova Scotia  
Tom Eckstein, MBA, Principal, Arundel Street Consulting Inc, St. Paul, MN  
Elliott Fisher, MD, MPH, Director, Center for Population Health, Dartmouth Institute for Health Policy and Clinical Practice, and  
Professor of Medicine and Community and Family Medicine, Dartmouth Medical School, Lebanon, NH.  
Howard Frumkin, MD, MPH, Dr. PH, Director of the National Center for Environmental Health, ATSDR, CDC, Atlanta, GA  
Thomas Kottke, MD, MSPH, Medical Director for Evidence-Based Health, HealthPartners, Minneapolis, MN  
Ali Mokdad, PhD, Professor of Global Health, Institute for Health Metrics and Evaluation, University of Washington, Seattle, WA.  
Roy Gibson Parrish, MD, Consultant in Population Health Information Systems, Peacham, VT  
Robert M. (Bobby) Pestronk, MPH, Executive Director, National Association of County and City Health Officials (NACCHO),  
Washington DC.  
Tom Ricketts, PhD, Professor of Health Policy and Administration, University of North Carolina  
Steven Teutsch, MD, MPH, Chief Science Officer, Los Angeles County Public Health, Los Angeles, CA.  
Julie Willems Van Dijk, PhD, RN, former Marathon County, WI Health Officer

Suggested citation: University of Wisconsin Population Health Institute. *County Health Rankings 2010*.



INSIDE BACK COVER – INTENTIONALLY BLANK



# County Health Rankings

Mobilizing Action Toward Community Health

[countyhealthrankings.org](http://countyhealthrankings.org)

